

CANDU NUCLEAR

NS71 Quick Couplings



Serving the CANDU Nuclear Community Worldwide

Thorburn Flex Inc



www.thorburnflex.com

High Quality Custom Flexible Piping Systems

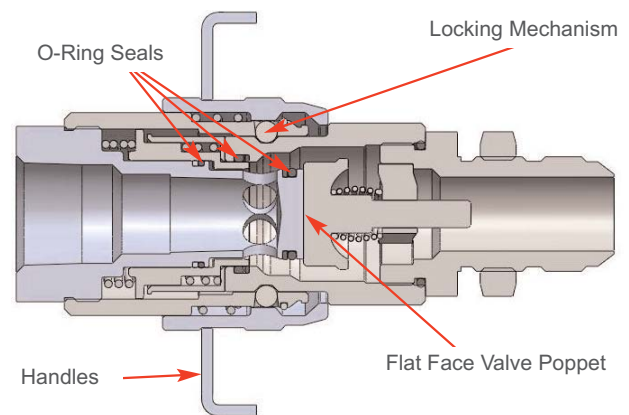
Thorburn Flex offers unmatched capabilities and expertise in applications engineering, design development and manufacture of custom flexible piping systems for CANDU nuclear power plants. Operating under a strategy of global presence, Thorburn Flex has structured and developed a specific CANDU business unit used to service this niche market sector. Through this CANDU business unit, our nuclear products consistently meet and exceed all quality design requirements of our CANDU nuclear reactor business partners.



NS71 - Dry Break, Quick Coupling System for CANDU Fueling Machines

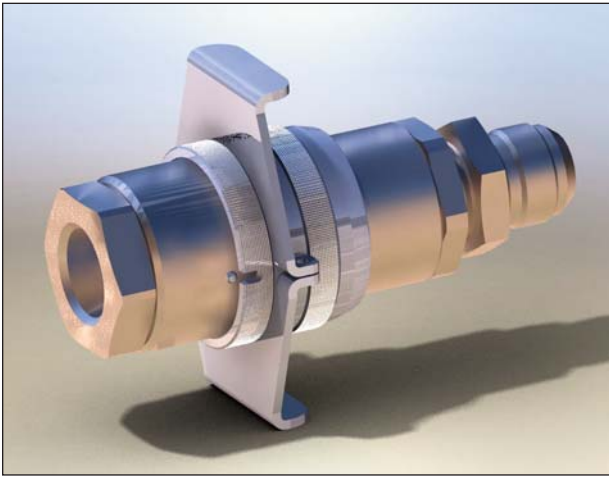
Product Description:

- Minimum Air inclusion and Fluid loss during disconnection
- Easy one-hand operation, low pressure connections
- Superior flow and reduced pressure drop
- Standard material: 316 SS, Sizes: from 1/4" to 2"
- Plug body made of SA564 Gr.630 Hardened Material
- Simple Maintenance & Spare part availability
- Special seals available for difficult media
- Design pressures for 1" size 3,000 PSI (184 BAR)
- CRN ASME Section III Sub Section ND Class 3
NFH-3-4284.5 (Coupler) NFH-3-4283.5 (Plug)



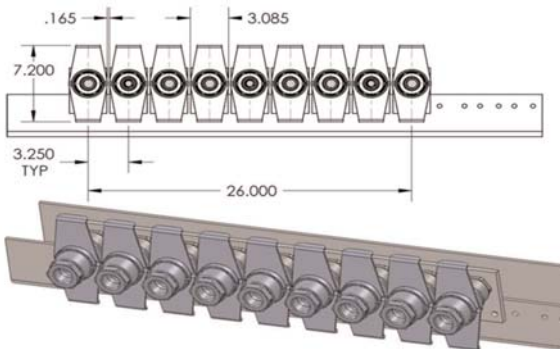
CANDU NUCLEAR

NS71 Series Technical Data

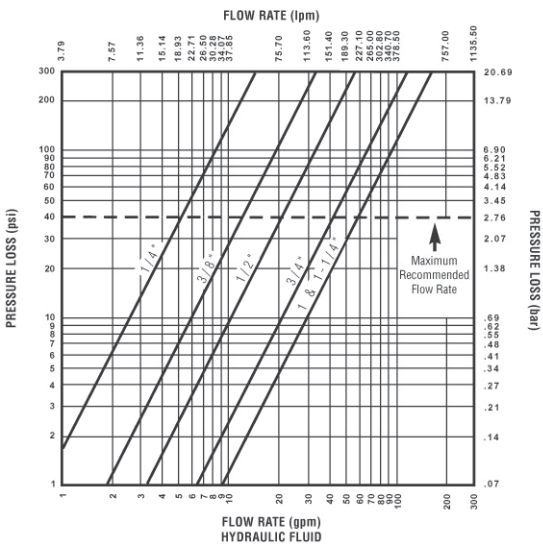


NS71 adaptable handle system to ease connecting/disconnecting

Manifold Support System



Flow Rate - Pressure Loss Chart



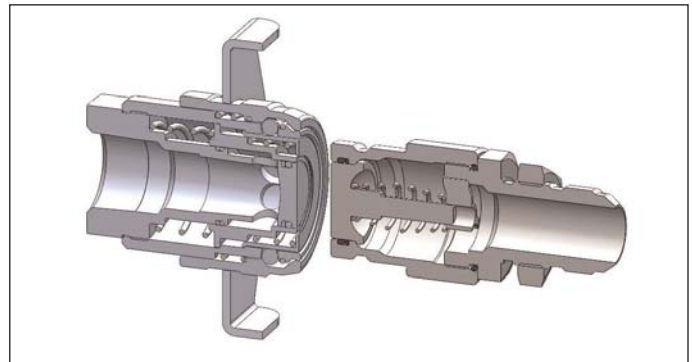
PRESSURE RATINGS - 316 STAINLESS STEEL

SIZE (INCHES)	SPILLAGE (CC)	AIR INCLUSION (CC)	DESIGN PRESSURE		MIN BURST	
			PSI	BAR	PSI	BAR
1/4	.02	.01	3,000	207	20,000	1379
3/8	.02	.02	3,000	207	20,000	1379
1/2	.03	.03	3,000	207	20,000	1379
3/4	.06	.04	3,000	207	15,000	1034
1	.10	.06	3,000	207	15,000	1034
1 1/4	.10	.06	2,500	172	15,000	1034
1 1/2	5.25	30.5	2,500	172	10,000	689
2	5.25	30.5	2,500	172	10,000	689

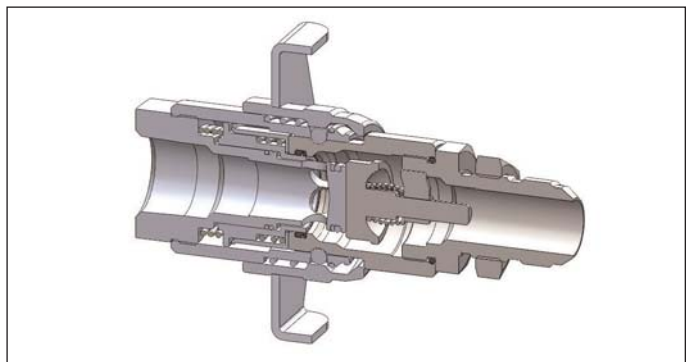
Thorburn Flex NS71 Series Wiggins Comparison

SPECIFICATION	GE SPECIFICATION No: 38-35230-C-007-001	THORBURN	WIGGINS
DESIGN PRESSURE	2,100	2,947	1,282
MIN BURST PRESSURE	14,250	20,000	8,700
SPILLAGE (ml)	10	.01	15
PRESSURE DROP	N/A	8 psi@ 29 gpm	8 psi@ 29 gpm

No Spill Connection or Disconnection



Disconnected



Connected



AMERICAS

THORBURN FLEX HEAD OFFICE
173 Oneida, Pointe-Claire, Quebec
Canada, H9R 1A9

Tel: +1-514-695-8710
Fax: +1-514-695-1321

sales@thorburnflex.com

ASIA

THORBURN FLEX Malaysia
162 1st floor, Jalan Sungai Ujong, Taman AST
70200, Seremban, Negeri, Sembilan, Malaysia

Tel: +601-96608863
Fax: +606-7637098

sales@thorburnflex.com

EUROPE

THORBURN FLEX Poland
41 Wroclawska St.
Jelena, Góra, Poland

Tel: +48-75-752-1793
Fax: +48-75-752-1793

sales@thorburnflex.com

1-800-363-6613 (Toll Free North America)

CRN for all Canadian Provinces



N285.0 | B51



ASME "U" Stamp (Registered)



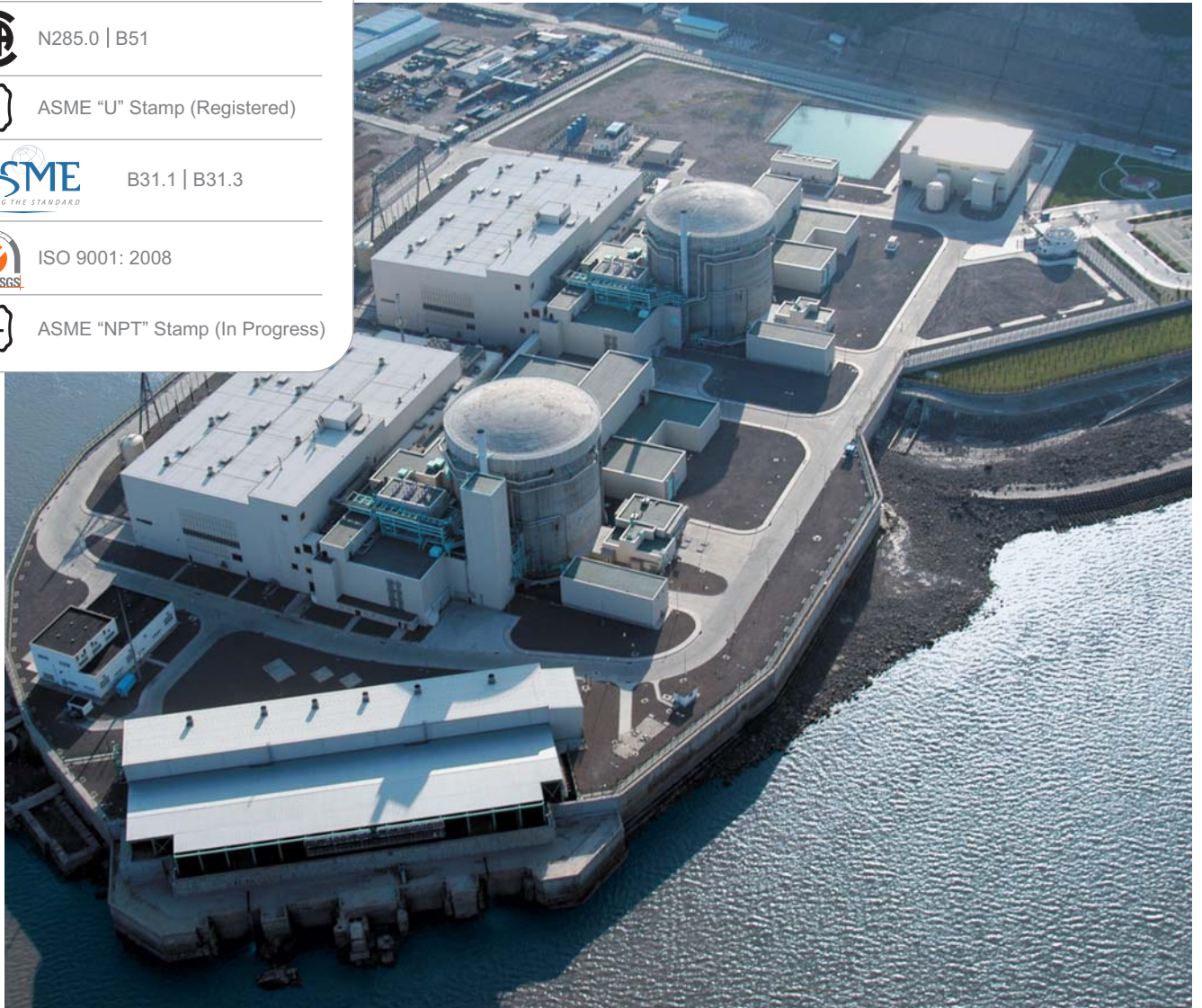
B31.1 | B31.3



ISO 9001: 2008



ASME "NPT" Stamp (In Progress)



*Over 50 Years of Flexible Piping Experience
Waiting To Serve You...*