



NT71 Quick Couplings

**Serving The Nuclear Industry**

Canada   
[www.thorburnflex.com](http://www.thorburnflex.com)

## High Quality Custom Flexible Piping Systems

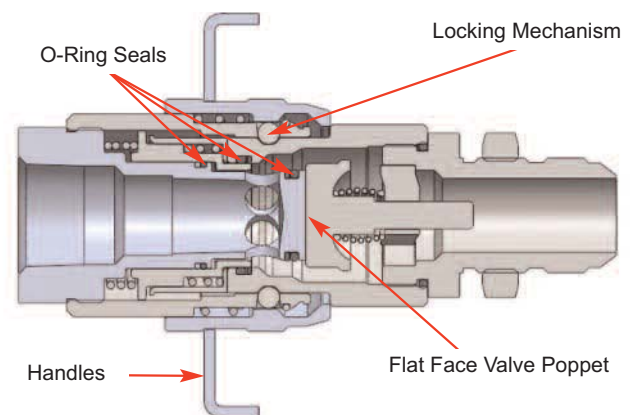
Thorburn Flex Inc is a proven industry leader in the cost effective design, development, manufacturing and supply of ultra-high quality custom flexible piping systems. Thorburn Flex Inc is committed to a policy of continuous development and research to provide flexible piping products that set the industry standard for quality, safety, durability and ease of handling.



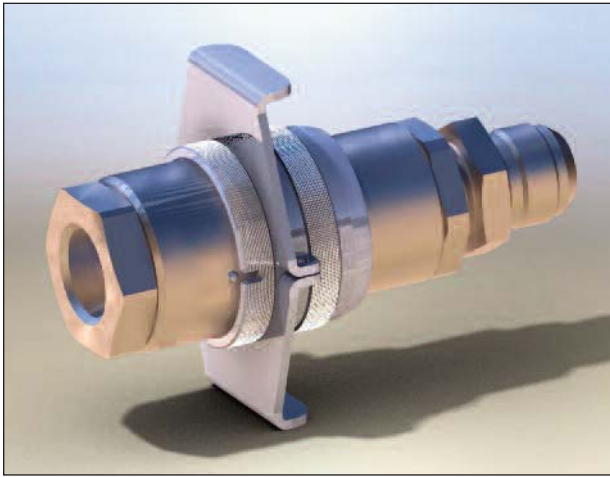
## NT71 Dry Break Quick Coupling System

### Product Description:

- Minimum Air inclusion and Fluid loss during disconnection
- Easy operation, low pressure connections
- Superior flow and reduced pressure drop
- Standard material: 316 SS, Sizes: from 1/4" to 2"
- Plug body made of SA564 Gr.630 Hardened Material
- Simple Maintenance & Spare part availability
- Special seals available for difficult media
- Design pressures for 1" size 3,000 PSI (184 BAR)
- CRN ASME Section III Sub Section ND Class 3  
NFH-3-4284.5 (Coupler) NFH-3-4283.5 (Plug)

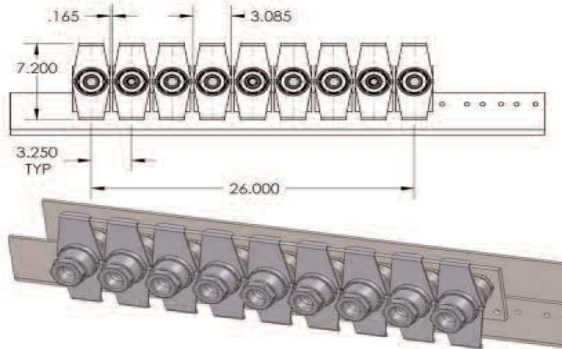


## NT71 Series Technical Data

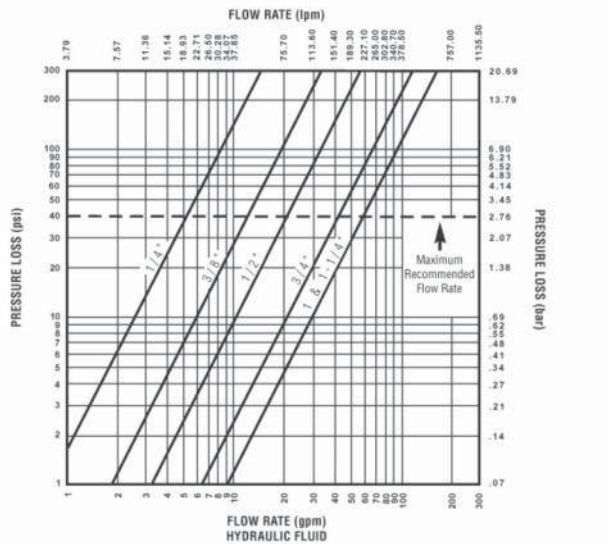


NT71 adaptable handle system to ease connecting/disconnecting

### NT71 Manifold Support System



### Flow Rate - Pressure Loss Chart



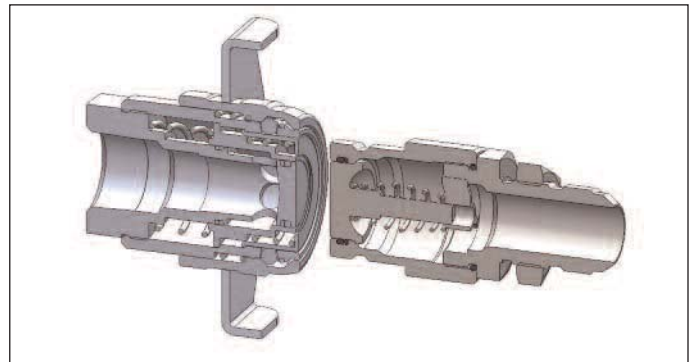
### PRESSURE RATINGS - 316 STAINLESS STEEL

| SIZE (INCHES) | SPILLAGE (CC) | AIR INCLUSION (CC) | DESIGN PRESSURE |     | MIN BURST |      |
|---------------|---------------|--------------------|-----------------|-----|-----------|------|
|               |               |                    | PSI             | BAR | PSI       | BAR  |
| 1/4           | .02           | .01                | 3,000           | 207 | 20,000    | 1379 |
| 3/8           | .02           | .02                | 3,000           | 207 | 20,000    | 1379 |
| 1/2           | .03           | .03                | 3,000           | 207 | 20,000    | 1379 |
| 3/4           | .06           | .04                | 3,000           | 207 | 15,000    | 1034 |
| 1             | .10           | .06                | 3,000           | 207 | 15,000    | 1034 |
| 1 1/4         | .10           | .06                | 2,500           | 172 | 15,000    | 1034 |
| 1 1/2         | 5.25          | 30.5               | 2,500           | 172 | 10,000    | 689  |
| 2             | 5.25          | 30.5               | 2,500           | 172 | 10,000    | 689  |

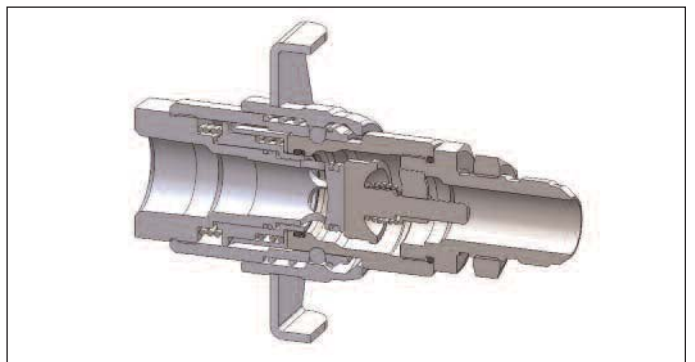
### Thorburn Flex NT71 Series Wiggins Comparison

| SPECIFICATION      | GE SPECIFICATION<br>No: 38-35230-C-007-001 | THORBURN<br>1" (25mm) | WIGGINS<br>1" (25mm) |
|--------------------|--|-----------------------|----------------------|
| DESIGN PRESSURE    | 2,100                                      | 2,947                 | 1,282                |
| MIN BURST PRESSURE | 14,250                                     | 20,000                | 8,700                |
| SPILLAGE (ml)      | 10   | .01                   | 15                   |
| PRESSURE DROP      | N/A  | 8 psi@ 29 gpm         | 8 psi@ 29 gpm        |

### No Spill Connection or Disconnection



Disconnected



Connected

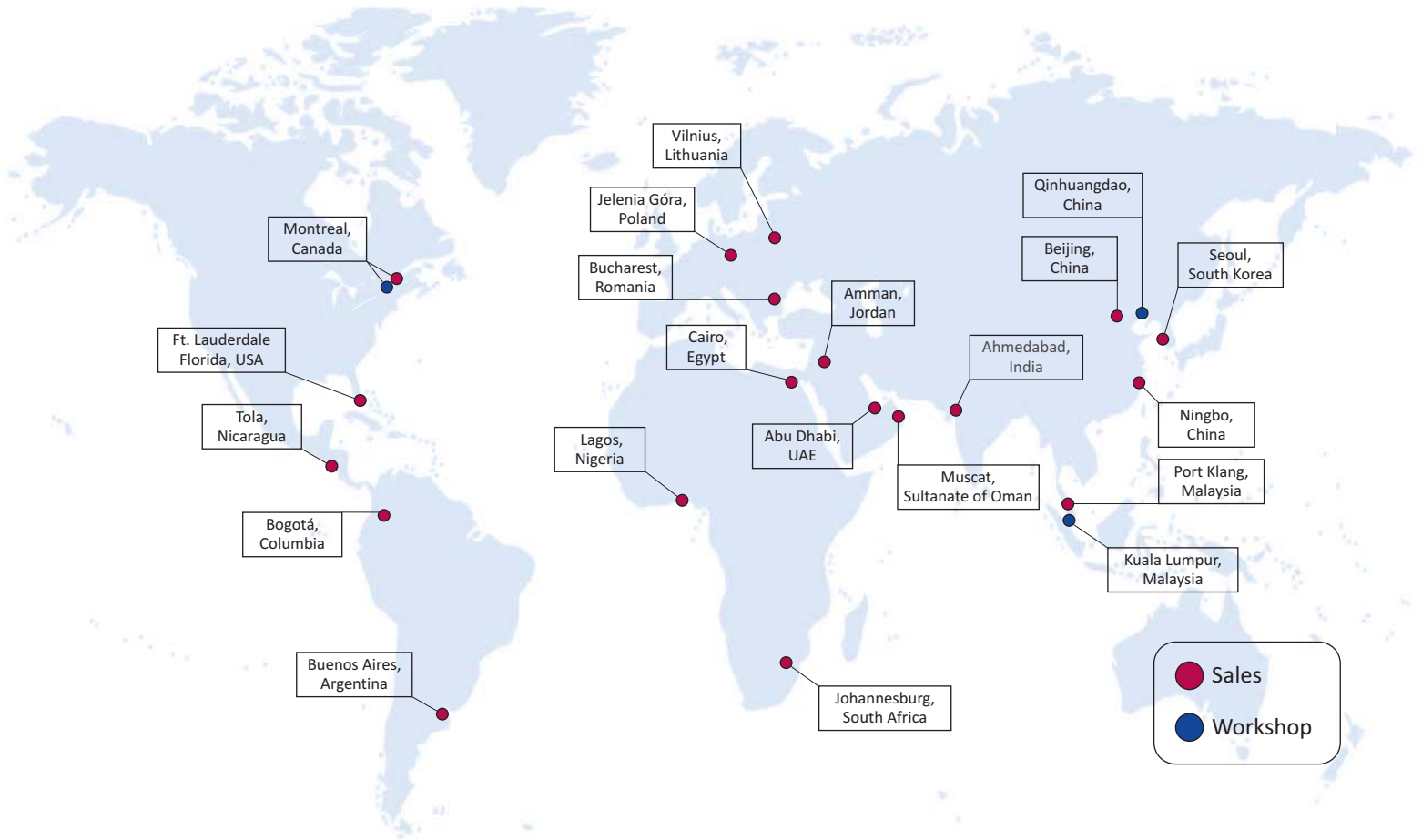


**THORBURN FLEX - Canada**  
 165 Oneida, Pointe-Claire, Quebec  
 Canada, H9R 1A9  
 Tel: +1-514-695-8710  
 Fax: +1-514-695-1321  
 sales@thorburnflex.com



ISIR Romania | CNCAN Romania | EN 13480-2002 | HAF 604 China | TSG China  
 (CRN for all Canadian Provinces)

# Thorburn's Global Presence



www.thorburnflex.com